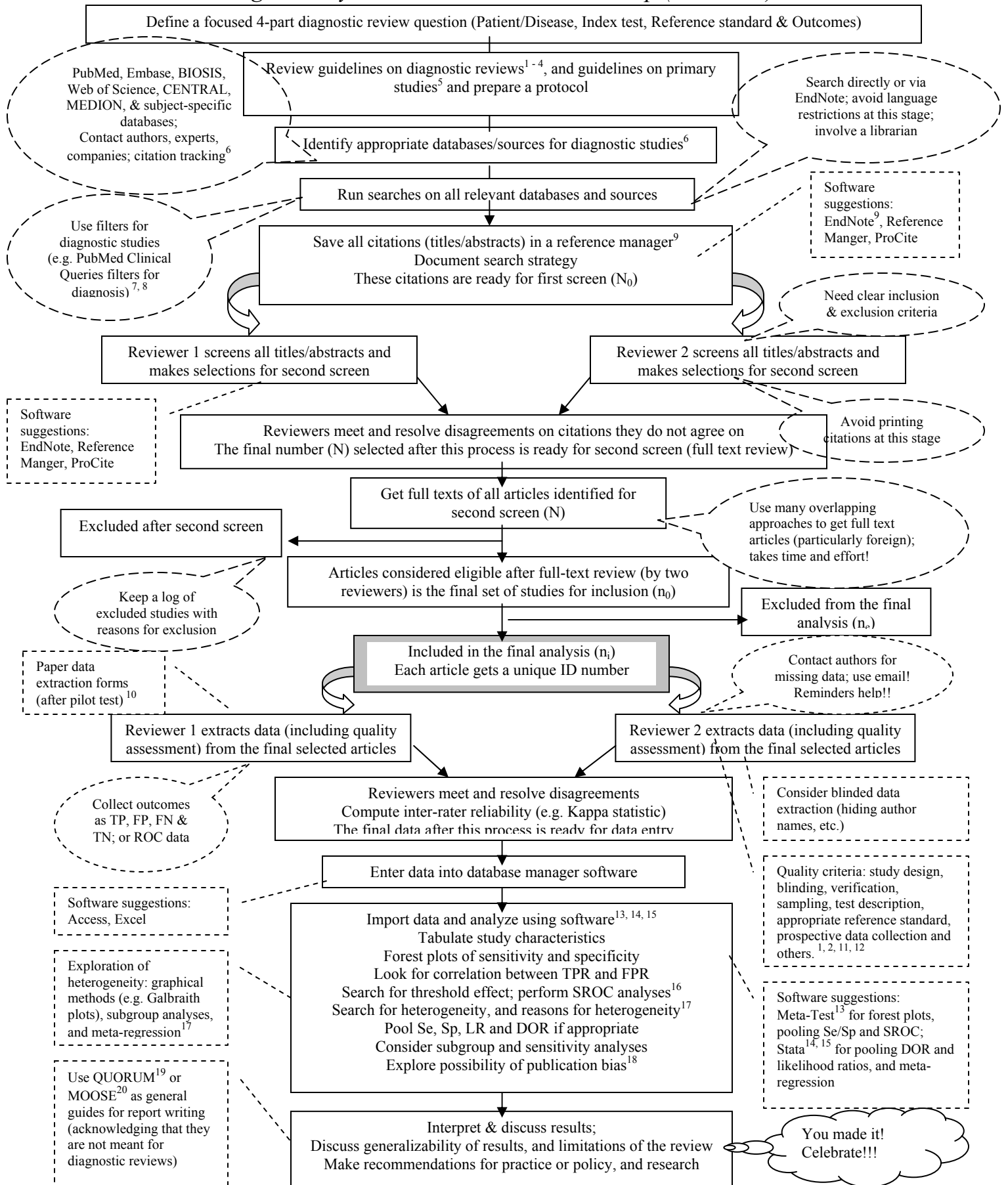


Diagnostic Systematic Reviews: A Road Map (Version 3)



Diagnostic Systematic Reviews: A Road Map (Version 3): Links and References

1. Cochrane Methods Group on Systematic Review of Screening and Diagnostic Tests: Recommended Methods. Cochrane Collaboration, 1996. <http://www.cochrane.org/cochrane/sadtdoc1.htm>.
2. Deville WL, Buntinx F, Bouter LM, Montori VM, De Vet HC, Van Der Windt DA, Bezemer P. Conducting systematic reviews of diagnostic studies: didactic guidelines. *BMC Med Res Methodol* 2002; **2**(1): 9. <http://www.biomedcentral.com/1471-2288/2/9>
3. Deeks JJ. Systematic reviews of evaluations of diagnostic and screening tests. In: Egger M, Smith GD, Altman DG, eds. *Systematic reviews in health care. Meta-analysis in context*. London: BMJ Publishing Group, 2001: 248–282. www.systematicreviews.com
4. Irwig L, Macaskill P, Glasziou P, Fahey M. Meta-analytic methods for diagnostic test accuracy. *J Clin Epidemiol* 1995; **48**: 119–30.
5. Bossuyt PM, Reitsma JB, Bruns DE, Gatsonis CA, Glasziou PP, Irwig LM, Lijmer JG, Moher D, Rennie D, de Vet HC; Standards for Reporting of Diagnostic Accuracy steering group. Towards complete and accurate reporting of studies of diagnostic accuracy: the STARD initiative. *BMJ* 2003; **326**: 41–44. <http://bmj.bmjournals.com/cgi/content/full/326/7379/41>
6. Finding studies for systematic reviews: a basic checklist for researchers. NHS Center for Reviews and Dissemination, University of York: <http://www.york.ac.uk/inst/crd/revs.htm>
7. Pai M. Cheat sheet for using search filters in PubMed. Berkeley Systematic Reviews Group: <http://www.medepi.org/meta/litsearch.html>
8. McKibbon A, et al. *PDQ Evidence-based Principles and Practice*. Hamilton: BC Decker, 1999.
9. EndNote Tip Sheet: Importing References into EndNote: <http://www.endnote.com/support/helpdocs/EN7-ImportRefs.pdf>
10. Sample data extraction form for diagnostic reviews: Berkeley Systematic Reviews Group: <http://www.medepi.org/meta/forms.html>
11. Lijmer JG, Mol BW, Heisterkamp S, Bossel GJ, Prins MH, van der Meulen JH, Bossuyt PM. Empirical evidence of design-related bias in studies of diagnostic tests. *JAMA* 1999; **282**: 1061–6.
12. Jaeschke R, Guyatt G, Lijmer J. Diagnostic tests. In: Guyatt G, Rennie D, eds. *Users' guides to the medical literature. A manual for evidence-based clinical practice*. Chicago: AMA Press, 2002: 121–140. <http://www.usersguides.org/>
13. Lau J. Meta-Test version 0.6. New England Medical Center, Boston, 1997. Available at <http://www.cochrane.org/cochrane/sadt.htm>.
14. Sterne JAC, Bradburn MJ, Egger M. Meta-analysis in Stata. In: Egger M, Smith GD, Altman DG, eds. *Systematic reviews in health care. Meta-analysis in context*. London: BMJ Publishing Group, 2001: 347–369. <http://www.bmj.com/books/sysrev/chapter18.pdf>
15. Pai M, McCulloch M, Colford JM. Meta-analysis commands in Stata. Berkeley Systematic Reviews Group: <http://www.medepi.org/meta/softwar.html>
16. Littenberg B, Moses LE. Estimating diagnostic accuracy from multiple conflicting reports: a new meta-analytic method. *Med Decis Making* 1993; **13**: 313–321.
17. Lijmer JG, Bossuyt PM, Heisterkamp SH. Exploring sources of heterogeneity in systematic reviews of diagnostic tests. *Stat Med* 2002; **21**: 1525–37.
18. Song F, Khan KS, Dinnes J, Sutton AJ. Asymmetric funnel plots and publication bias in meta-analyses of diagnostic accuracy. *Int J Epidemiol* 2002; **31**: 88–95.
19. Moher D, Cook DJ, Eastwood S et al. Improving the quality of reports of meta-analyses of randomized controlled trials: the QUORUM statement. *Lancet* 1999; **354**: 1896–1900. <http://www.consort-statement.org/>
20. Stroup DF, Berlin JA, Morton SC, et al. Meta-analysis of observational studies in epidemiology: a proposal for reporting. Meta-analysis Of Observational Studies in Epidemiology (MOOSE) group. *JAMA* 2000 Apr 19; **283**(15):2008-12. <http://www.consort-statement.org/>

Websites with useful resources for conducting diagnostic reviews:

- Cochrane Group on Screening and Diagnostic Tests: <http://www.cochrane.org/cochrane/sadtdoc1.htm>
- Berkeley Systematic Reviews Group: www.medepi.org/meta
- MEDION Database of diagnostic reviews: <http://www.mediondatabase.nl/>